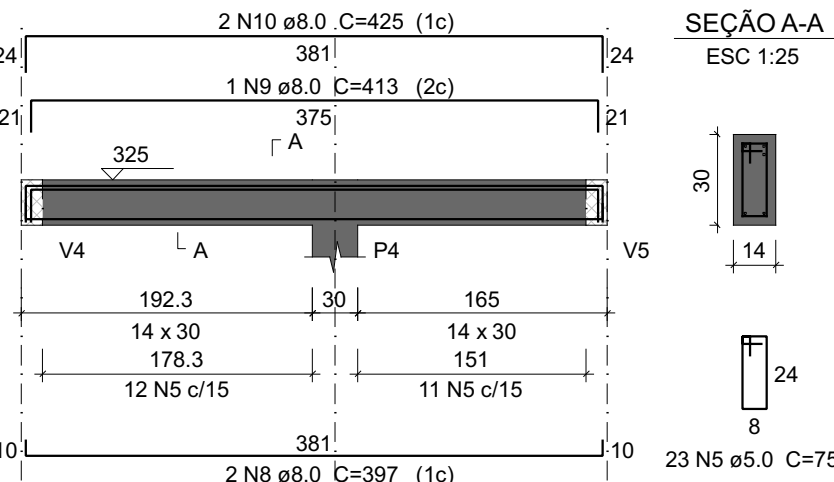
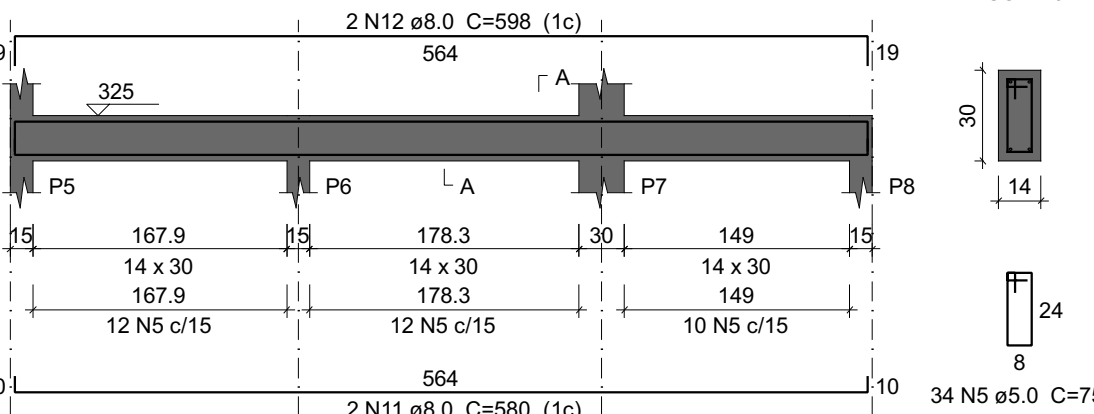


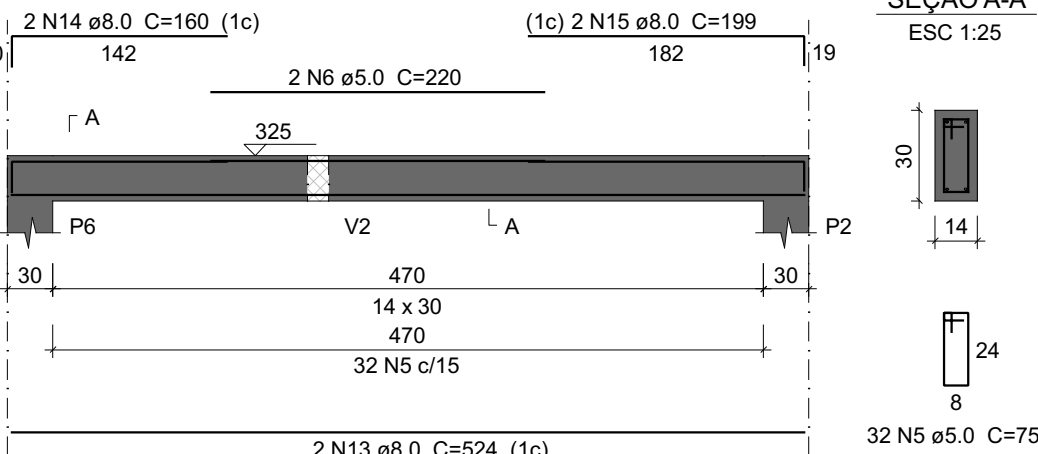
V2
ESC 1:50



V3
ESC 1:50



V4
ESC 1:50



Relação do aço

Positivos Y		V2	V3		
V4		V5	V6		
V9		V10	V11		
V12		V13	V14		
AÇO	N	DIAM (mm)	QUANT	C.UNIT (cm)	C.TOTAL (cm)
CA60	1	5.0	18	326	5868
	2	5.0	18	206	3708
	3	5.0	17	VAR	VAR
	4	5.0	7	253	1771
	5	5.0	244	75	18300
CA50	6	5.0	4	220	880
	7	5.0	23	109	2507
	8	8.0	2	397	794
	9	8.0	1	413	413
	10	8.0	2	425	850
	11	8.0	4	580	2320
	12	8.0	4	598	2392
	13	8.0	4	524	2096
	14	8.0	2	160	320
	15	8.0	4	199	796
	16	8.0	2	159	318
	17	8.0	5	479	2395
	18	8.0	2	515	1030
	19	8.0	2	253	506
	20	8.0	2	278	556
	21	8.0	2	147	294
	22	8.0	2	186	372
	23	8.0	2	363	726
	24	8.0	1	92	92
	25	8.0	2	380	760
	26	8.0	2	374	748
	27	8.0	2	391	782
	28	12.5	2	561	1122

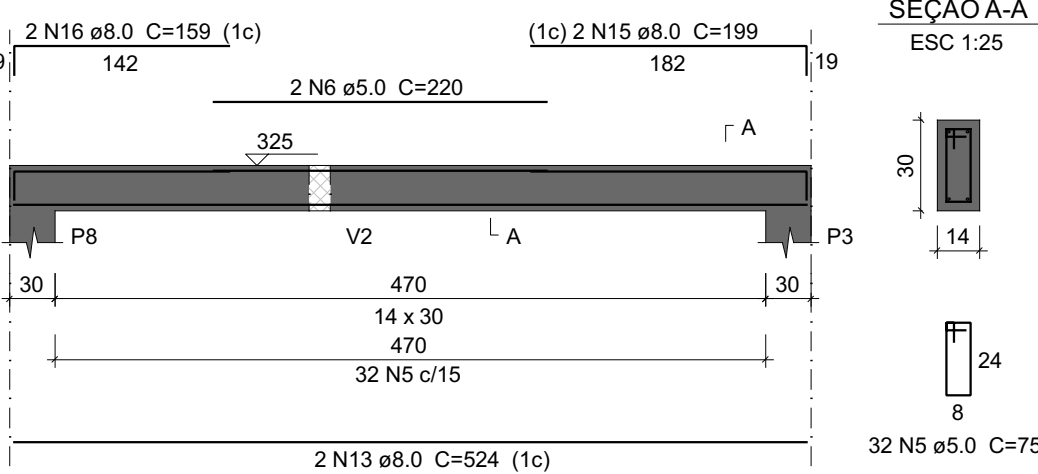
Resumo do aço

ÁÇO	DIAM (mm)	C.TOTAL (m)	PESO + 10 % (kg)
CA50	8.0	185.6	80.6
CA60	12.5	11.3	11.9
CA60	5.0	395.2	67
PESO TOTAL (kg)			
CA50	92.4		
CA60	67		

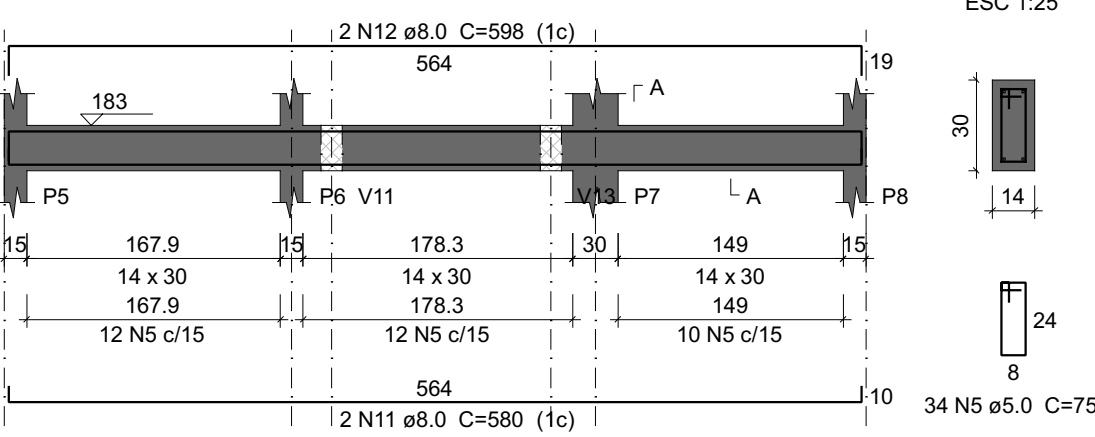
Volume de concreto (C-25) = 1.86 m³
Área de forma = 26.98 m²

Armação positiva das lajes do pavimento TÉRREO (Eixo Y)

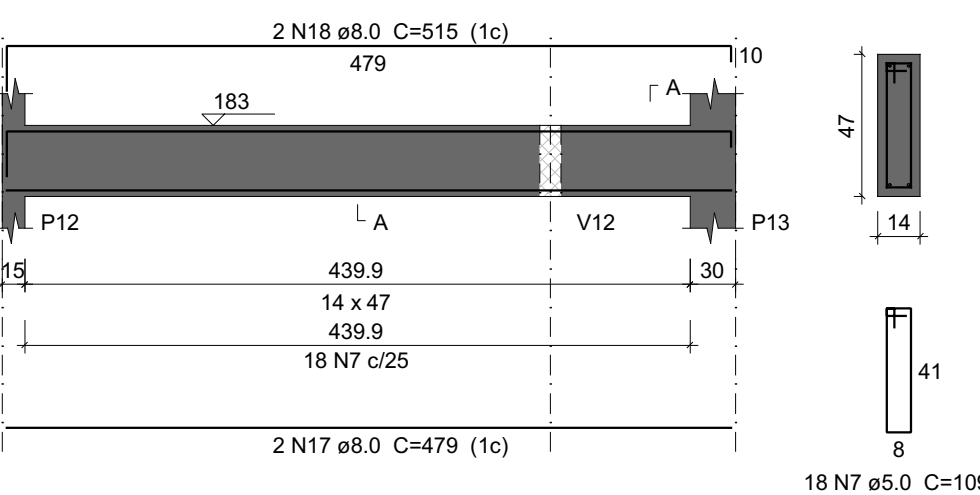
V5
ESC 1:50



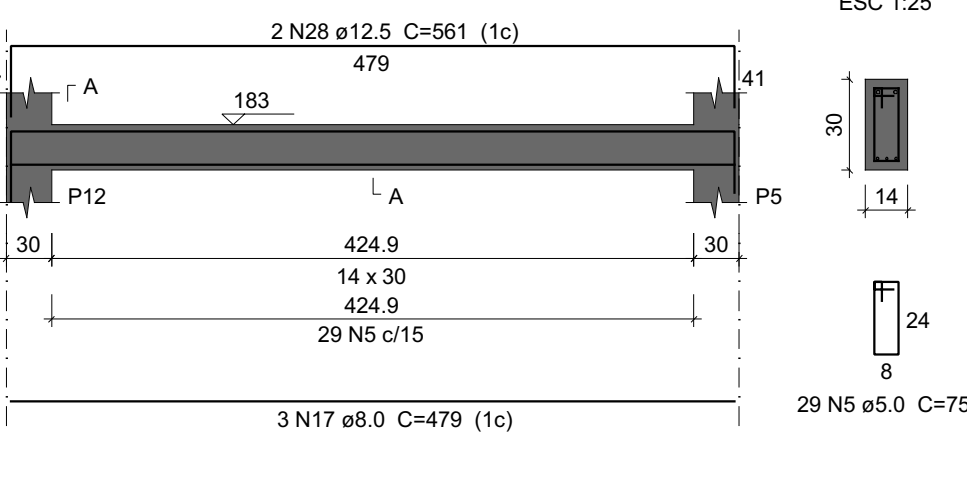
V6
ESC 1:50



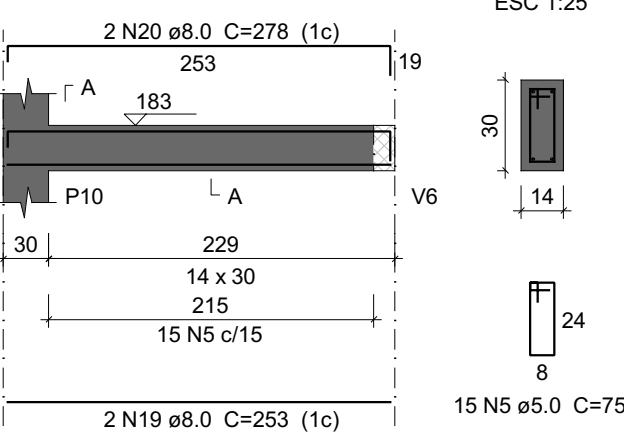
V9
ESC 1:50



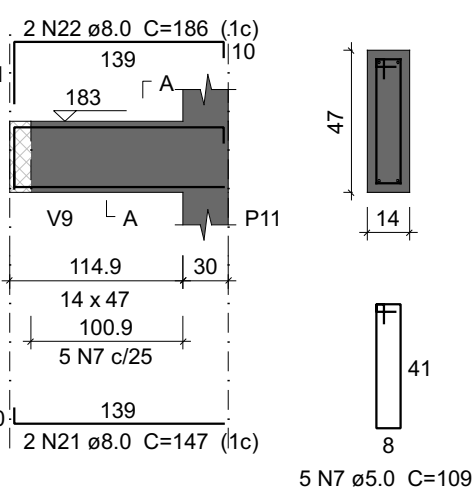
V10
ESC 1:50



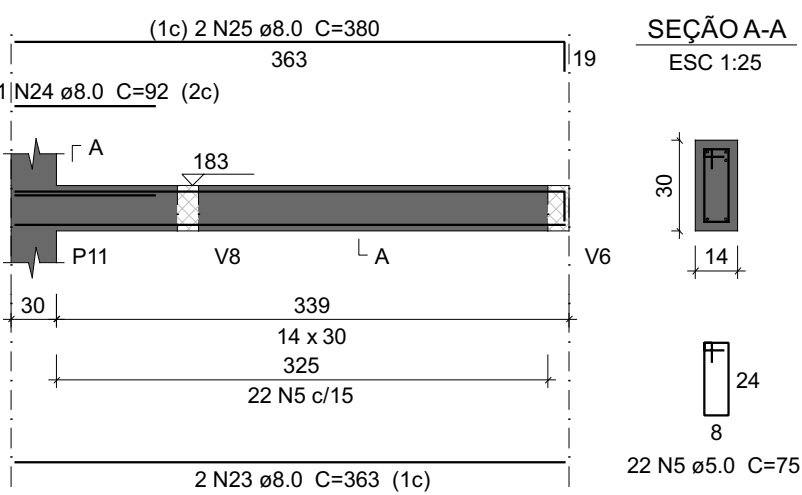
V11
ESC 1:50



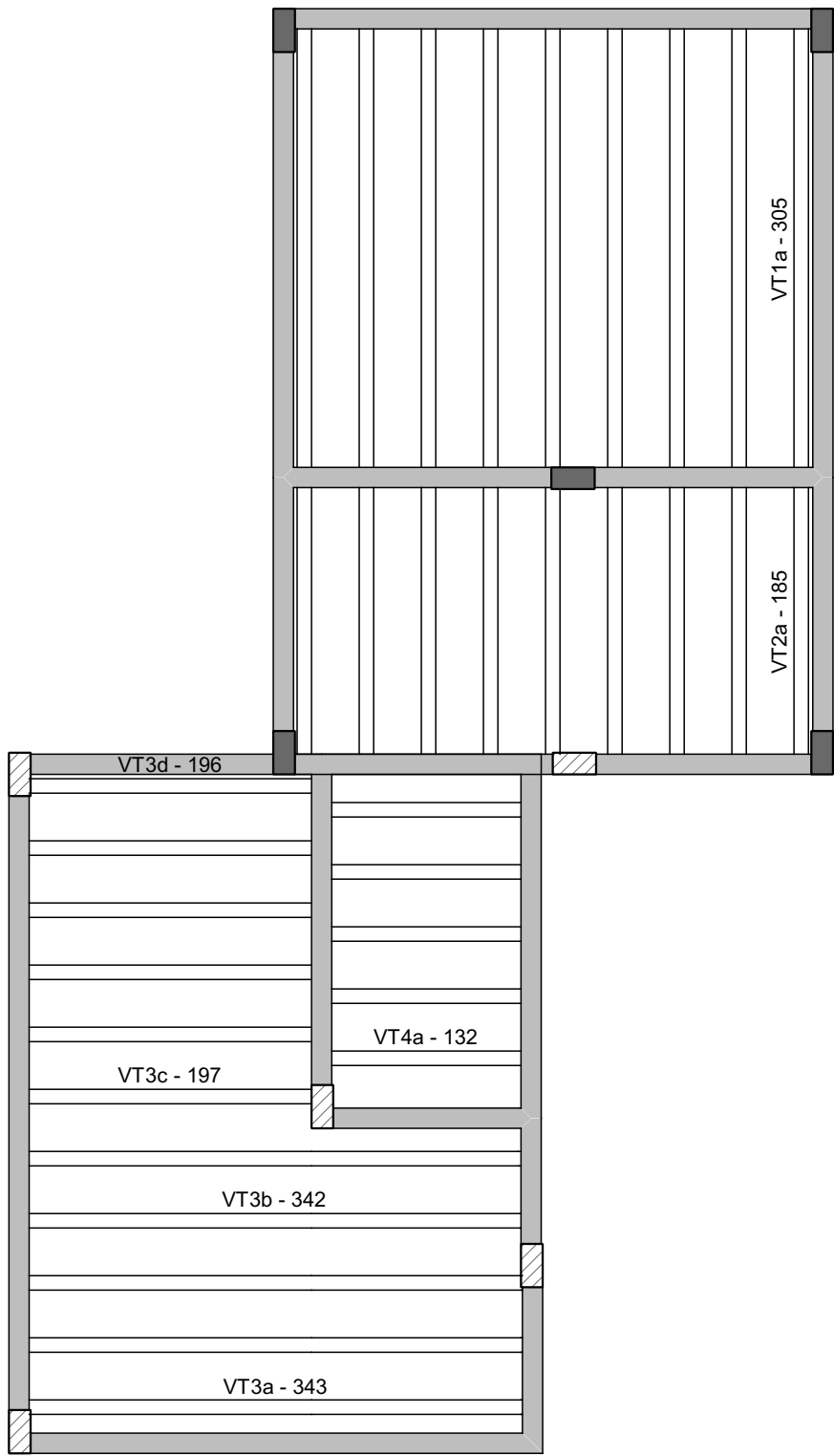
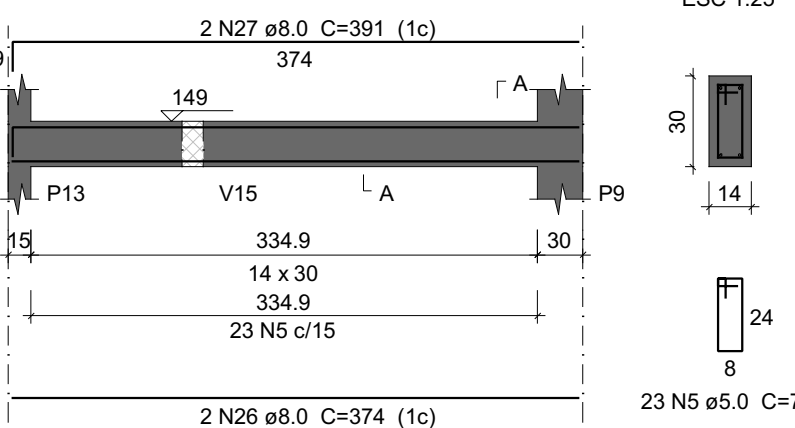
V12
ESC 1:50



V13
ESC 1:50



V14
ESC 1:50



Planta de vigotas pré-moldadas

REVISÃO	DESCRIÇÃO	REVISADO POR	DATA
0	EMIÇÃO INICIAL	WAGNER DARY	JUL/2025

<div>SECRETARIA DE ESTADO DE SEGURANÇA PÚBLICA</div> <div>SERGIFE GOVERNO DO ESTADO</div>		DIRETORIA DE ARQUITETURA E EDIFICAÇÕES PRAÇA TOBIAS BARRETO, nº 20, BAIRRO SÃO JOSÉ CEP: 49050-220 ARACAJU/SE TELS: (79)3216-5454 / (79)88851-9337	
TIPO:		Nº DA PRANCHA	
PROJETO ESTRUTURAL DO COPE		6 / 11	
ASSUNTO:		Moldados in loco do pavimento TÉRREO	
END.:			
CENTRO ADMINISTRATIVO GOVERNADOR AUGUSTO FRANCO – CAPUCHO – ARACAJU/SE			
AUTOR DO PROJETO:		JOSÉ VITOR DE JESUS COSTA	
RESPONSÁVEL TÉCNICO:		RN: 2719438219	
JOSÉ VITOR DE JESUS COSTA			
ESCALA: INDICADA	DATA: JUL/2025	DESENHISTA: WAGNER DARY	